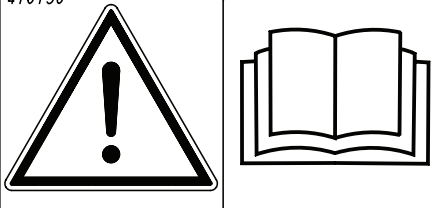


JD4600
Terminal Software: 10.8.333



416150



Denna Quick Start ersätter inte instruktionsboken!
Denne Quick Start erstatter ikke instruktionsbogen!
Denne Quick Start erstatter ikke instruksjonsboken!
Tämä Quick Start-pikaopas ei korvaa käyttöohjekirjaa!
This Quick Start guide does not replace the instruction manual!
Diese Quick Start-Anleitung ist kein Ersatz für das Handbuch!
Ce guide Quick Start ne remplace pas le manuel d'instructions!
Instrukcja szybkiego uruchomienia nie zastępuje instrukcji obsługi,
którą należy przeczytać przed rozpoczęciem użytkowania
maszyny. Šis ātrais mācību materiāls neaizvieto lietošanas
instrukciju!
Šis „Quick Start“ vadovas nepakeičia instrukcijas!

See kiirjuhend Quick Start ei asenda kasutusjuhendit!
Návod Quick Start nenahrazuje návod k použití!
Ez a Quick Start útmutató nem helyettesíti a Használati útmutatót!
La presente guida Quickstart non sostituisce il manuale di
istruzioni! Это руководство «Quick Start» не заменяет основное
руководство по эксплуатации!
Ta vodnik Quick Start ne nadomešča priročnika z navodili!
Този бърз справочник не заменя наръчника!
Ο παρών οδηγός Γρήγορης εκκίνησης δεν αντικαθιστά το εγχειρίδιο οδηγιών!

Väderstad ISOBUS implement with JD4600

NOTE! *This document is a quick guide only and requires that the Väderstad implement is connected correctly and that the user possesses some basic knowledge of how this display and it's functions is working. For further information regarding display functions we refer to the user manual provided by the manufacturer.*

TIP! Some chapters in this guide refers to the displays user manual. Before you use this guide in field, please read through this guide completely and make sure you have access to the required documentation.

1. Introduction

When installing and running a Väderstad ISOBUS implement with a ISOBUS terminal, it is important to follow and complete the steps in this guide.

This document is a quick guide only and requires that the Väderstad implement is connected correctly to the display and that the user possesses some basic knowledge of how this display and it's functions is working. For further information regarding display functions we refer to the operators manual provided by the manufacturer.

Before you proceed to the next chapter, please ensure that both the terminal software and the Väderstad software matches the one specified on the Väderstad homepage.

<http://www.vaderstad.com/products/vaderstad-e-services/isobus>

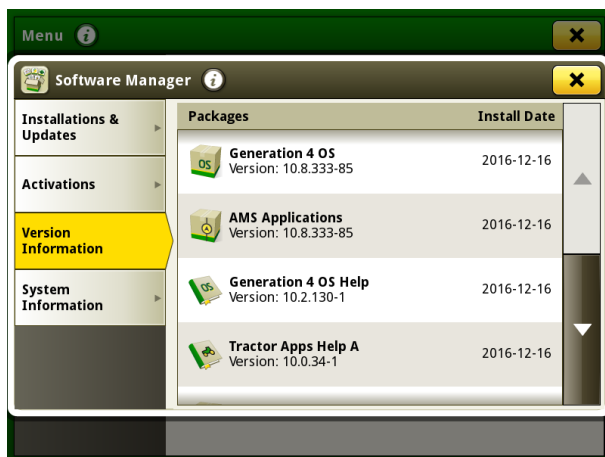
2. Check the terminal software version

It's important that the display software matches the one tested from Väderstad. If the display software separates from the one tested, some functionality may not work as expected.

To view the display software version, go to:

Main Menu -> System -> Software Manager -> Version Information.

Check the “*Generation 4 OS Version : xx.x.xxx-xx*”.



Screen 1. Version Information.

If the software version is incorrect, please contact your local John Deere dealer. If the version matches please continue to the next step.

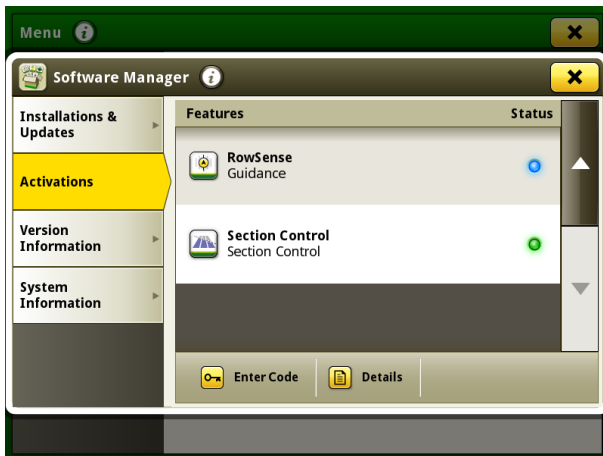
3. Check Activations

In order for “Section Control” and/or “Variable Rate” to work the display must be unlocked with a specific license. If the display is locked, please advise your local display reseller in order to purchase this activation.

To view the display activations, go to:

Main Menu -> System -> Software Manager -> Activations.

Make sure “Section Control” is Active.



Screen 2. Activations

4. Creating a implement on the display

When Task Controller is used the JD4600 automatically creates a implement profile, please proceed to the next chapter of this guide.

5. Activating Task Controller in Väderstad User Interface (UI)

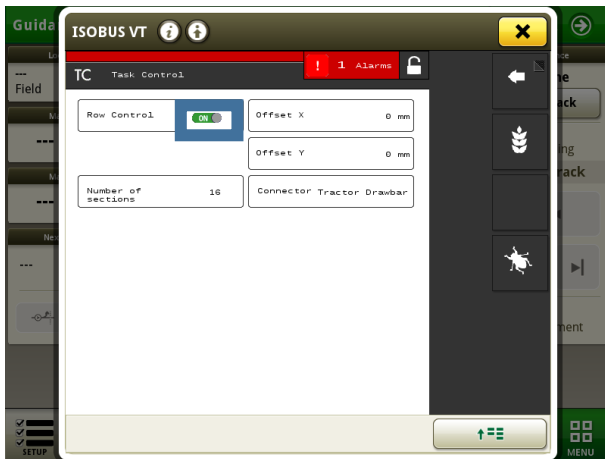
Open the “Väderstad UI”. In the Väderstad UI, press “Settings”, on the next screen press “General Settings”. Toggle the Task Control button to “ON” (screen 3).



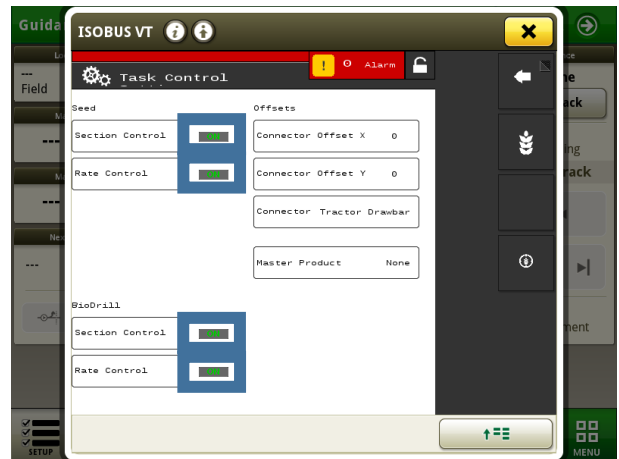
Screen 3. Task Controller ON

Once the Task Controller is set to “ON” a new implement will be detected by the display.

From the general settings, press the “TC-submenu” button. In this menu you’re telling the display what product to be controlled and also what functions to be used by turning “Section Control” and/or “Variable Rate” to ON or OFF. In this menu you’re also able to set the implement offsets and ON/OFF timers for each product. For further information regarding these settings please read the “Task Control”-chapter in the Väderstad E-Control user manual.

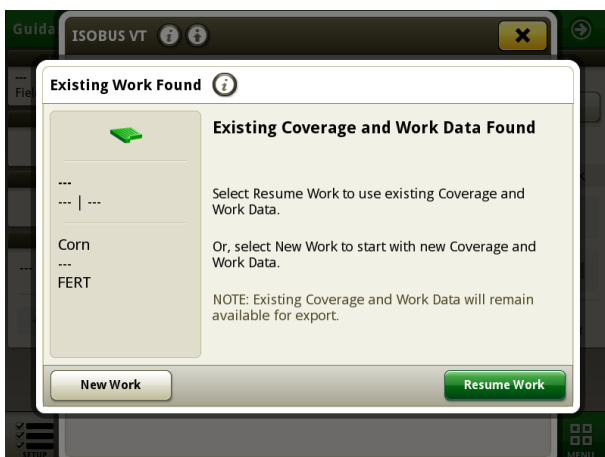


Screen 4. TC- Submenu Tempo



Screen 5. TC-Submenu RD/RDA

When all settings is set and the TC-submenu is exited, a warning will appear. This warning is shown since the Task Controller object pool is updated. This warning can be ignored by pressing “Accept”. After 20 seconds the new implement profile is updated with the latest settings. When the JD4600 find a new implement you will get the question if you want to start a new work or resume the active work. Here you have to choose depending if you already have a work set up or want to start a new.

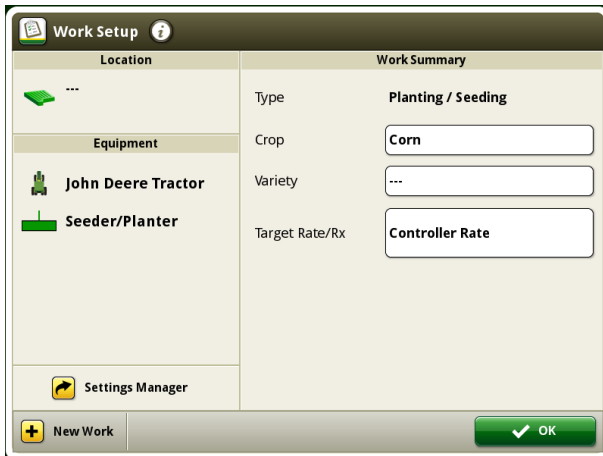


Screen 6. Existing work.

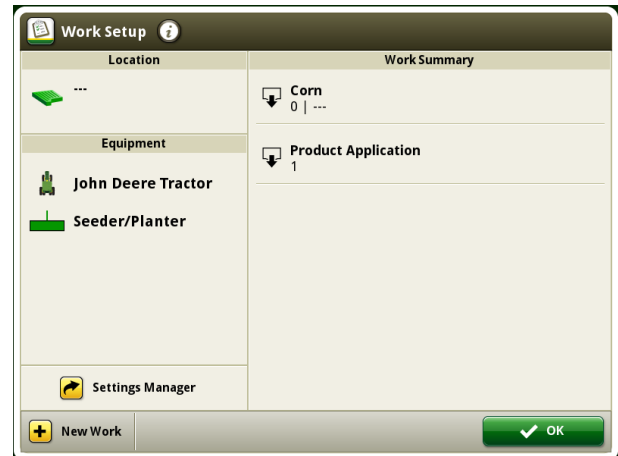
6. Create job and/or enter necessary documentation settings

To setup work go to:

Main Menu -> Applications -> Work Setup.



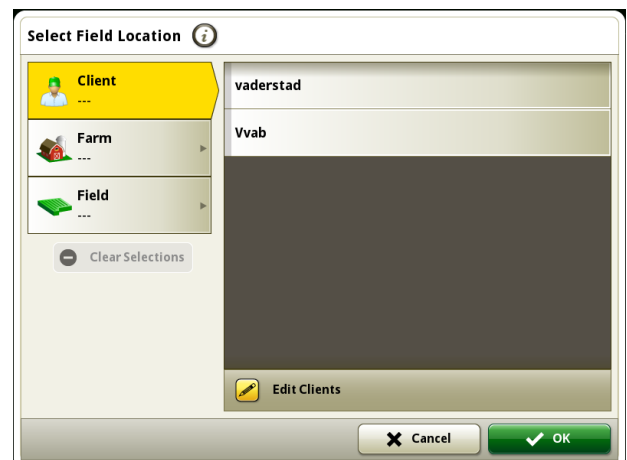
Screen 7. Work Setup Single product.



Screen 8. Work Setup Multiple products.



Screen 9. Work Setup, Edit product.



Screen 10. Select Field Location.

To edit a product when you use multiple products you tap the row of the product you want to edit and the Screen 9 will appear.

Here you have to fill in the wanted data for the logging by selecting the “*location*”, “*Crop*”, “*Variety*” and select if the Target rate should use a prescription file or not.

8 Use of “Section Control”

8.1 Create field and field boundaries

If section control is to be used when exiting field and/or headland boundaries these must be defined. For further information, please see the “*Fields and Boundaries (30-1)*” chapter in the Generation 4 CommandCenter operators manual.

8.2 Section Control Settings

If section control is to be used when exiting field and/or headland some settings must be set. For further information, please see the “*Section Control (40-1)*” chapter in the Generation 4 CommandCenter operators manual.

9 Use of “Variable Rate”

9.1 Import/Load shapefile

If “Rate Control” is to be used, a prescription file must be used. For further information, please see the “*Work Setup and Mapping (35-1)*” chapter in the Generation 4 CommandCenter operators manual.

10 Attachments

AMS Applications Generation 4 CommandCenter Display (OMPPFP17478 ISSUE E7)

Full version of Väderstad E-Services TEMPO operators manual. (Version 1.8)

<https://pdmlink.vaderstad.com/openext.aspx?id=b15c511a-e3d7-4a95-b25b-1b7803790ca7>

Full version of Väderstad E-Services RAPID A operators manual (Serial no: 1.1.2.0002)

<https://pdmlink.vaderstad.com/openext.aspx?id=ad782ea5-f538-4114-9ad1-35cf59c6fa50>

Väderstad AB
SE-590 21 VÄDERSTAD
Phone: +46 142-820 00
www.vaderstad.com



Where farming starts