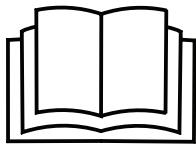


Trimble TMX
Terminal Software: 4.2.0.1



416150



Denna Quick Start ersätter inte instruktionsboken!
Denne Quick Start erstatter ikke instruktionsbogen!
Denne Quick Start erstatter ikke instruksjonsboken!
Tämä Quick Start-pikaopas ei korvaa käyttöohjekirjaa!
This Quick Start guide does not replace the instruction manual!
Diese Quick Start-Anleitung ist kein Ersatz für das Handbuch!
Ce guide Quick Start ne remplace pas le manuel d'instructions!
Instrukcja szybkiego uruchomienia nie zastępuje instrukcji obsługi,
którą należy przeczytać przed rozpoczęciem użytkowania
maszyny. Šis ātrais mācību materiāls neaizvieto lietošanas
instrukciju!
Šis „Quick Start“ vadovas nepakeičia instrukcijas!

See kiirjuhend Quick Start ei asenda kasutusjuhendit!
Návod Quick Start nenahrazuje návod k použití!
Ez a Quick Start útmutató nem helyettesíti a Használati útmutatót!
La presente guida Quickstart non sostituisce il manuale di
istruzioni! Это руководство «Quick Start» не заменяет основное
руководство по эксплуатации!
Ta vodnik Quick Start ne nadomešča priročnika z navodili!
Този бърз справочник не заменя наръчника!
Ο παρών οδηγός Γρήγορης εκκίνησης δεν αντικαθιστά το εγχειρίδιο οδηγιών!

Väderstad ISOBUS implement with Trimble TMX

NOTE! *This document is a quick guide only and requires that the Väderstad implement is connected correctly and that the user possesses some basic knowledge of how this display and its functions is working. For further information regarding display functions we refer to the user manual provided by the manufacturer.*

TIP! Some chapters in this guide refers to the displays user manual. Before you use this guide in field, please read through this guide completely and make sure you have access to the required documentation.

1. Introduction

When installing and running a Väderstad ISOBUS implement with a ISOBUS terminal, it is important to follow and complete the steps in this guide.

This document is a quick guide only and requires that the Väderstad implement is connected correctly to the display and that the user possesses some basic knowledge of how this display and it's functions is working. For further information regarding display functions we refer to the operators manual provided by the manufacturer.

Before you proceed to the next chapter, please ensure that both the terminal software and the Väderstad software matches the one specified on the Väderstad homepage.

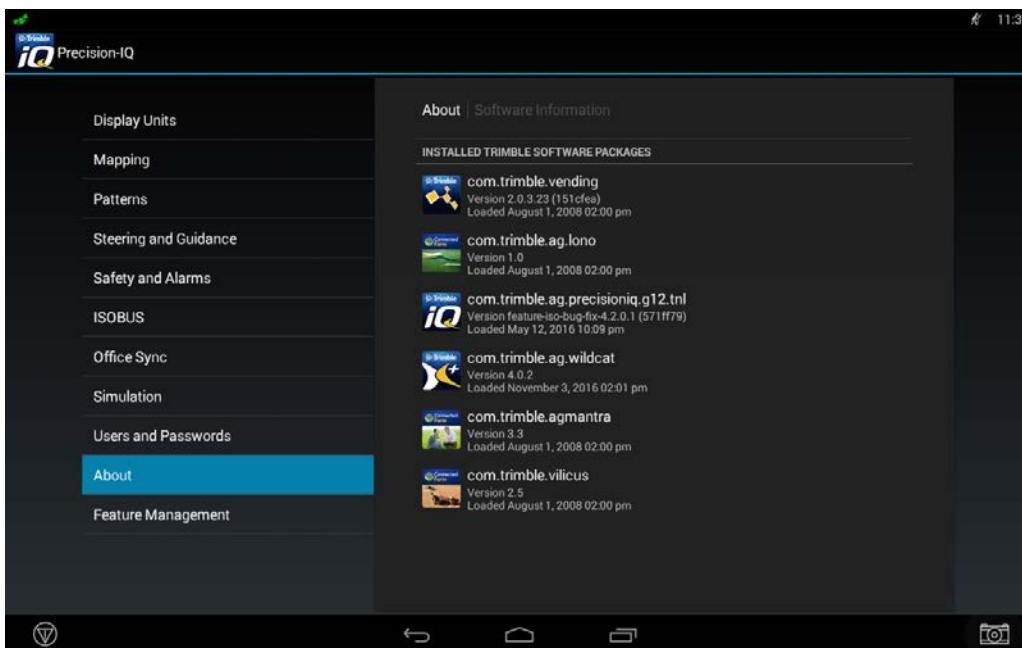
<http://www.vaderstad.com/products/vaderstad-e-services/isobus>

2. Check the terminal software version

It's important that the display software matches the one tested from Väderstad. If the display software separates from the one tested, some functionality may not work as expected.

To view the display software version, open Precision-IQ application and go to: **Settings -> About -> Software Information**

Check the row saying "*com.trimble.ag.precisionig.g12.tnl*".



Screen 1. Display software version screen.

If the software version is incorrect, please contact your local Trimble dealer. If the version matches please continue to the next step.

3. Check Activations

In order for “Section Control” and/or “Variable Rate” to work the display must be unlocked with a specific license. If the display is locked, please advise your local display reseller in order to purchase this activation.

To view the display activations, from the main screen go to:

App Central -> Browse Apps -> Licenses

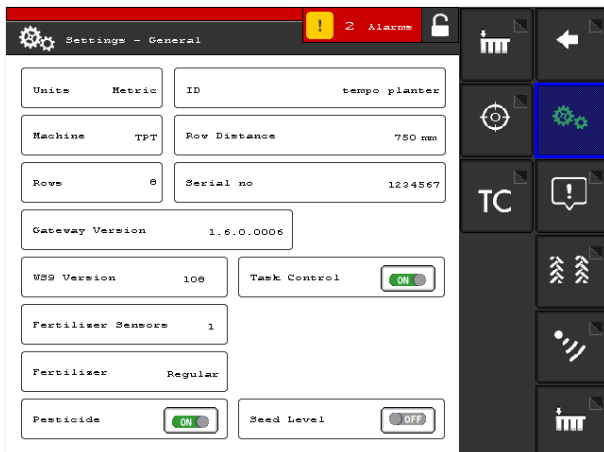
Make sure “ISOBUS TC ” is activated.



Screen 2. Display activations

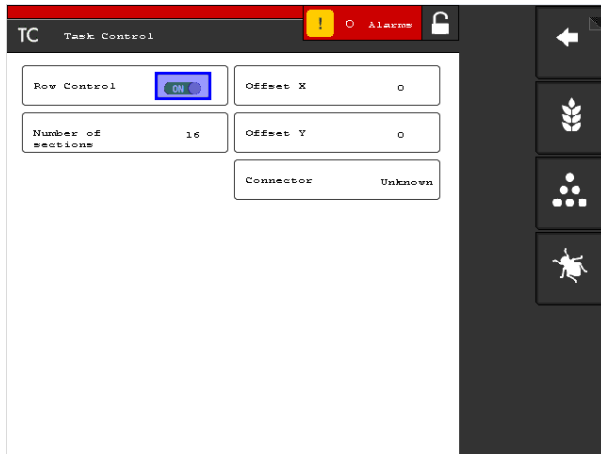
4. Activating Task Controller in Väderstad User Interface (UI)

Open the “Väderstad UI”. In the Väderstad UI, press “Settings”, on the next screen press “General Settings”. Toggle the Task Control button to “ON” (screen 3).

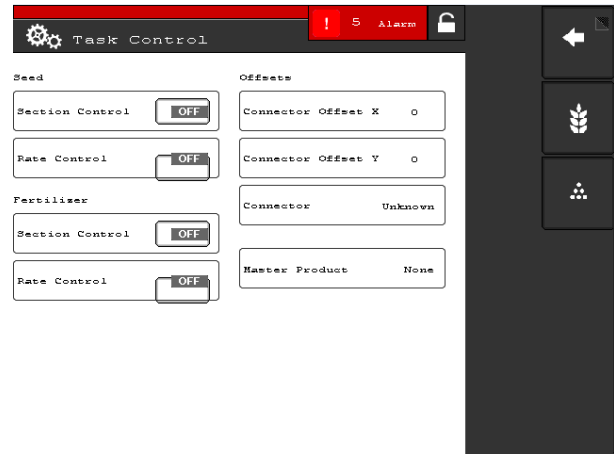


Screen 3. Task Controller ON

From the general settings, press the “TC-submenu” button. In this menu you’re telling the display what product to be controlled and also what functions to be used by turning “Section Control” and/or “Variable Rate” to ON or OFF. In this menu you’re also able to set the implement offsets and ON/OFF timers for each product. For further information regarding these settings please read the “Task Control”-chapter in the Väderstad E-Control user manual.



Screen 4. TC- Submenu Tempo




Screen 5. TC-Submenu RD/RDA

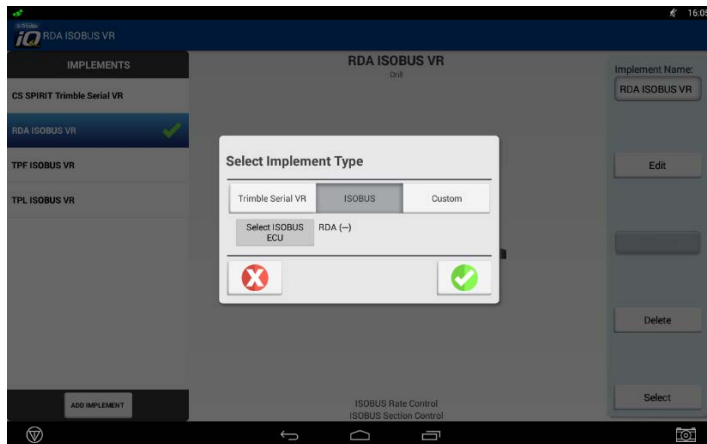
When all settings is set and the TC-submenu is exited the Task Controller object pool is updated and sent to the display. After 20 seconds the implement profile is updated with the latest settings.

WARNING: *No changes in the TC-submenu is to be done when a field is open or a job is created. If changes is done while a field is open or a task is started, the gateway and the display may end up in bad state causing rate/coverage feedback to be lost or implement changes not to be updated.*

5. Creating a implement on the display

Open Precision-IQ and from the “Home Screen”, press the implement button . On the next screen press “Add implement”.

The “Select implement type”-screen is shown, tap ISOBUS, the connected Väderstad implement should show (*if not, redo step 4 in this guide*), choose the implement you would like to configure then press the green checkmark to start retrieving implement information from the gateway.



Screen 6. Select the Väderstad implement communicating with the display.

Once all information is transferred a notification will show, press OK and the implement will show in the panel to the left. A yellow warning sign will indicate that the implement must be edited before it's used. Select the implement and press "Edit". Set the following parameters:

Operation: Planting (Tempo), Seeding (RD/RDA).
Implement Type: Standard Planter (Tempo), Drill (RD/RDA).
Hitch Type: Drawbar/Fixed Mount.
Hitch to GCP: 0.10 – 100m

When you reach "Application Control" in the wizard, select "New Channel" and press "Modify". On the next screen, choose the "Type"-tab. Set the following parameters:



Control Type: Should automatically be set to: "ISOBUS Task Control"
ISO Implement Data: Should automatically be set to the Väderstad Implement connected.
Material Type: Row Crop Seed (Tempo), Granular Seed (RD/RDA).
Rate Control: Turn ON/OFF dependent on what's set in Step 4 off this guide.
Section Control: Turn ON/OFF dependent on what's set in Step 4 off this guide.

Complete all steps then save the implement configuration, the yellow warning sign should now have disappeared. For further information see the ["Add an ISOBUS implement \(161\)"](#)-chapter in the operators manual.

6. Create job and/or enter necessary documentation settings

Before entering the "Run"-screen you must assign a material to the implement and select a field.

From the main menu press the material button  to select a material. For further information see the ["Add a material \(184\)"](#)-chapter in the operators manual.

To create a field press the add field button . To Select a field press the select field button . For further information, see the ["Field Basics \(152\)"](#)-chapter in the operators manual.

8 Use of “Section Control”

8.1 Create field and field boundaries

If section control is to be used when exiting field and/or headland boundaries these must be defined. For further information, please see the "[Guidance patterns \(200\)](#)"-chapter in the operators manual.

8.2 Section Control Settings

If section control is to be used when exiting field and/or headland some settings must be set. For further information, please see the "[Section Control for ISOBUS or serial rate \(229\)](#)"-chapter in the operators manual.

9 Use of “Variable Rate”

9.1 Import/Load shapefile

If “Rate Control” is to be used, a prescription file must be used. For further information, please see the "[Prescriptions \(179\)](#)"-chapter in the operators manual.

10 Attachments

Full version of the Trimble TMX-2050 user guide (Version 3.5, revision A).

<http://support.datavaxt.se/wp-content/uploads/2016/04/TMX-Trimble-Precision-IQ-User-Guide-3-5A.pdf>

Väderstad E-Services Rapid

<http://pdmlink.vaderstad.com/openext.aspx?id=10065801>

Väderstad E-Services Rapid A

<http://pdmlink.vaderstad.com/openext.aspx?id=10043228>

Väderstad E-Services Tempo L

<http://pdmlink.vaderstad.com/openext.aspx?id=10064506>

Väderstad E-Services Tempo T, Tempo F, Tempo V, Tempo R, FH

<http://pdmlink.vaderstad.com/openext.aspx?id=10038077>

Väderstad E-Services Spirit och Spirit R

<http://pdmlink.vaderstad.com/openext.aspx?id=10052287>

Väderstad AB
SE-590 21 VÄDERSTAD
Phone: +46 142-820 00
www.vaderstad.com

